



**IT WAS A QUIET  
REVOLUTION. WE  
DIDN'T KNOW IT**

**AT THE TIME.** SETTING UP A PLACE IN AN  
INNER-CITY CHURCH BASEMENT SO THAT MEN IN A  
NEARBY BOARDING HOUSE WOULD HAVE A PLACE  
TO GO. VETS WHO WERE SICK WITH WHAT WE NOW  
KNOW WAS MENTAL ILLNESS. POST-TRAUMATIC  
STRESS DISORDER. SELF-MEDICATING WITH DRUGS  
AND ALCOHOL. TRYING TO ESCAPE THE NIGHTMARES.  
THE VOICES. THE PARANOIA. THE SHAME.

**WE DIDN'T KNOW  
MUCH ABOUT MENTAL  
ILLNESS. BUT WE**

**FOUND OUT.** WE TRAVELED TO THE EAST AND  
WEST COASTS TO LEARN ABOUT HALFWAY HOUSES.  
WE CREATED WAYS TO HELP PEOPLE LIKE THOSE VETS.  
VICTIMS OF STIGMA AND MISUNDERSTANDING AND  
INJUSTICE. WE PAINTED WALLS. WROTE GRANTS.  
BOUGHT HOUSING. SOUGHT ADVICE. FOUND PARTNERS.  
SHARED A VISION.

**WE KNOW THE DARKNESS  
OF MENTAL ILLNESS. WE  
SEE OURSELVES IN THE  
FACES OF THOSE WHO  
NEED HELP.** FORTY YEARS LATER, THE VISION IS  
EVEN STRONGER. A WORLD WHERE PEOPLE WITH MENTAL  
ILLNESS ARE PART OF THE COMMUNITY, NOT SHUNNED  
BY IT. WE BELIEVE IN RECOVERY AND HOPE. WE REACH  
THOUSANDS OF PEOPLE WITH COMPASSION AND CARE.  
PEOPLE ARE BEGINNING TO UNDERSTAND. STIGMA IS  
STARTING TO CRUMBLE AROUND THE EDGES. BUT  
THERE IS STILL SO MUCH TO DO. AND WE THE PEOPLE  
ARE HERE TO DO IT.

SEVERAL OF THE STORIES AND POEMS IN THIS COLLECTION — AND ALL OF THE ARTWORK — ARE  
BY WRITERS AND ARTISTS WITH MENTAL ILLNESS WHO PARTICIPATE IN PEOPLE INCORPORATED'S  
ARTABILITY ART SHOW, AN ANNUAL EVENT CELEBRATING THE CONTRIBUTIONS AND CREATIVITY  
OF PEOPLE WITH MENTAL ILLNESS.

#### TABLE OF CONTENTS

HARRY MAGHAKIAN, THE POWER OF THE PEOPLE 4 • GAIL HARBECK, POOLS 8 • CARMA GRABER, MEDITATION 11 •  
MOLLY McMILLAN, THE BOTTOM LINE 12 • ELIAS LUKE LAVELLE, IMPERFECT 14 • ALISON BERGBLOM JOHNSON,  
TEMPORARY OR PERMANENT 16 • MARY KAY McJILTON, THE VISION THING 19 • TIM BURKETT, PEOPLE LIKE CHARLOTTE 21 •  
40 YEARS TIMELINE 22

# THE POWER OF THE PEOPLE

HARRY MAGHAKIAN

Eugene Debs Becker, Dayton Avenue Presbyterian Church, 1962  
Courtesy of the Minnesota Historical Society

**MY WIFE, JUDY, AND I** were blessed and challenged to be called to serve at Dayton Avenue Presbyterian Church in 1962. Though proud of their Cass Gilbert building and its Casavant Pipe Organ, the congregation was barely surviving. The community around these historical gems had changed radically. Absentee-landlord boarding houses, high crime, schools struggling to teach kids and break the cycle of poverty. Judy and I bought a home in the midst of all of this, and although it was a poor investment, we had come to invest our lives in our call and become part of this community. It became our family's home for the next twelve years.

Together with this unique congregation, we discovered a line that gave us our direction. "The agenda of the church must be written by the world." We all took this seriously and worked to bring new life to this aged building with banners, color, a message of hope and belonging. We were energized by the people who came in, looking for a place to call home. Like the vets who lived next door. We saw them wandering around in a daze every day, therapeutically addicted. We opened the basement, set up some chairs, a coffee pot, and some ashtrays, and took down the "No Smoking" signs. Taking down the walls that isolated us from them. They shared their despair. **THEIR VOICES AND STORIES TOUCHED THE VERY MEANING OF WHAT IT MEANS TO BE HUMAN BEINGS IN COMMUNITY.**

They became our mentors in helping shape a program that cares about the dignity and common good of everyone. Four other Presbyterian Churches were moved to join us. It's this collective energy that ignited the flame that became People Incorporated.

## PEOPLE INCORPORATED HAS ALWAYS BEEN A “PEOPLE POWER” MOVEMENT

**RIGHT FROM THE GET-GO.** It is people coming together, working together towards a vision. It took a lot of committed volunteers working long hours, month after month, to get things up and running, including our first program, which was a halfway house for men addicted to alcohol. Hours of committee meetings and paperwork. Those early board members did everything, too, from hiring staff to painting walls. We chose our name without a lot of thought—we said, “Well, we’re dealing with people, what about ‘People Incorporated?’” We had that “just do it” kind of attitude. But it really says something about who we are. We saw people being treated as less than human, and came together to help, adding in others along the way. Now People Incorporated is 40 years old, helping thousands of people live their lives with hope and purpose.

Even though People Incorporated has grown to over 40 programs, I’m happy to see that the essence of what we were in those early days is still at its core today. What they now call “client-centered” services is really just treating people with dignity and respect, starting where each person is at and building from there. There’s a strength that comes from all the people that are standing behind People Incorporated, too. The greatest joy for me is the momentum that’s been created. It’s my hope that People Incorporated will keep responding and simply say, “We can do it.” **THERE’S NOTHING MORE POWERFUL THAN PEOPLE WITH HEART WORKING TOGETHER.**

Rev. Harry Maghakian planted the seed that would become People Incorporated at Dayton Avenue Presbyterian, Saint Paul, in 1969.

Artwork: Audrey Bernard, *Mr. Pops*



# POOLS

GAIL HARBECK

NOT QUITE TALL ENOUGH TO TOUCH THE BOTTOM OF THE POOL, I LEARNED TO SWIM AS A LITTLE GIRL. I RECALL HOW GOOD IT FELT; ALONE IN COOLING WATER, FEELING SUPPORT, FEELING COMFORT; THE SOOTHING CRAVED BY A YOUNG BODY, A YOUNG SOUL. LEARNING TO DOG PADDLE—MOVING BEYOND THE FEAR OF DYING. AND WISHING, TOO, THAT LIFE ON LAND COULD BE LIKE THAT. NOT QUITE TALL ENOUGH TO TOUCH THE BOTTOM OF THE POOL, I WANTED TO BE SAFE. • I RECALL MY SUSPICIOUS DELIGHT WHEN AUNT EV CHEERED ME ON AS I SWAM AROUND THE POOL. SHE MARVELED AT MY FISHINESS, (MOM AND DAD INDIFFERENT, WANTING TO CRITICIZE, STINKING IN THEIR POOL OF NEGATIVITY). I RECALL I DOUBTED EV’S SINCERITY AS SHE STOOD IN THE GRASS, THE SUN SHINING HOT, HANDS FIRST TO HER CHEEKS AND THEN TO HER THIGHS ON PRINTED DRESS. “GOODNESS YOU SWIM SO WELL.” NOT QUITE TALL ENOUGH TO TOUCH THE BOTTOM OF THE POOL, I COULDN’T BELIEVE HER. • NOW MILES FROM INDIFFERENCE AND WITH YEARS OF HEALING TRUTH, I RECALL HER BESIDE THAT POOL; HER SWEET FACE SUNBURNED, HER EYES LIKE WATER, HER TRUTH, HER LOVE, HER WELCOMING POOL OF SUPPORT. TEARS CURL AROUND MY SMILE AND I BELIEVE HER. LEARNING TO LIVE—MOVING BEYOND THE FEAR OF DYING—I WALK LOVINGLY ON LAND AS SHE DID. TALL ENOUGH TO TOUCH THE BOTTOM OF THE POOL, I AM SAFE NOW.

Gail Harbeck is a People Incorporated client, and a writer and artist with the People Incorporated Artability art show.

Artwork: June Orr, #3







# meditation

CARMA  
GRABER

WHO WERE YOU BEFORE YOU KNEW  
YOU HAD TO BE  
SOMETHING?  
YOU WERE BREATHING IN,  
BREATHING OUT.  
WHO WERE YOU BEFORE EXPECTATION, STRIVING,  
JUDGMENT AND WORRY?  
YOU ARE THAT STILL,  
JUST SITTING.  
JUST SITTING IN THE MIDDLE OF THE COSMOS,  
KNOWING YOU BELONG  
LIKE THE TREES OR THE MOON;  
THE CLOUDS THAT GATHER, BREAK APART  
AND REAPPEAR,  
THE WIND THAT WHISPERS OR CRIES.  
JUST SITTING,  
EACH SEASON RISING AND FALLING  
WITHIN YOU.

Carma Graber is a volunteer, writer, and artist  
with People Incorporated's Artability art show.

Artwork: Gail Harbeck, *Meditation IV*

MOLLY McMILLAN THE

**THE BOTTOM LINE IS IMPORTANT TO ME.** Fiscal prudence is key to any nonprofit, and from my first involvement with People Incorporated many years ago, I've been impressed with the care with which they manage their resources. Donors and funders need to know that their gifts are being used wisely. People Incorporated receives the highest marks on that score. Their programs are also highly cost-effective compared with the costs of ignoring the problem—the costs of things like police time, prisons, detox treatments, and hospitalizations. **BUT PEOPLE INCORPORATED'S BOTTOM LINE IS ABOUT MORE THAN JUST BALANCE SHEETS.** It's their underlying conviction that people with mental illness should live with dignity and hope, just like you and me. For centuries, people with mental illness were kept out of sight, out of mind—warehoused in institutions or left to fend for themselves. People Incorporated is helping our community to draw the line and say NO MORE. They are showing us all a new way to think about people with mental

# BOTTOM LINE

illness. They are creating new paradigms for helping people—with a gifted staff and with the partnership of others such as the University of Minnesota’s Department of Psychiatry—and doing so with great compassion and concern, an approach rooted in their earliest days back on Dayton Avenue. They’re helping us take great leaps forward with exciting, innovative programs such as the Safe Havens that tackle the problem of homelessness at its roots, helping those with mental illness get treatment and move into their own homes again. Or by creating crisis residences that give people in mental health crisis an alternative to emergency rooms and locked hospital wards. People Incorporated is helping us to see that we all have a fundamental need to find meaning and purpose in life, and to have a voice in what happens to us. **THE BOTTOM LINE IS THAT THERE IS A BETTER WAY TO HELP PEOPLE WITH MENTAL ILLNESS, AND PEOPLE INCORPORATED IS DEDICATED TO HELPING US FIND IT.**

# I M P E R F E C T

ELIAS LUKE LAVELLE

WOULD YOU SIT AT MY TABLE?  
HAVE SOME TEA?

YA KNOW,  
YOU'RE IMPERFECT JUST LIKE ME.

HEY! LET'S GAZE AT EACH OTHER WITH IMPERFECT EYES  
LET'S SETTLE IN OUR CHAIRS IMPERFECT THIGHS  
I RUN MY FINGERS OVER FACES WITH FINGERTIPS  
PASSING OVER PIMPLES  
MOLES  
BLIPS

AND YOU SOFTEN YOUR LIPS AND HEAR ME SAY,  
"LET'S JUST SIT AND BE IMPERFECT,  
JUST FOR TODAY."

LET'S LAUGH AT PERFECT AS IT PASSES AWAY

HIGH AS HELIUM GOES ABOVE OUR HEADS  
WHO CARES PERFECT IS TOO HIGH TO FRET  
A BIRD, A PLANE, A SUPERMAN  
TOO HIGH, MY FRIEND, TO FEEL THE LAND

TOSSING, TURNING, SCRAPED UP, FREE  
BAREFOOT LAUGHING BENEATH OUR FEET

I LOOK AT YOU AND YOU LOOK AT ME,

IMPERFECT IS.

LET I M P E R F E C T BE!

Elias Luke LaVelle is a People Incorporated client, and an artist, writer, and volunteer with People Incorporated's Artability art show.

Artwork: Mike Conroy, *The Jacket Back*



© M Conroy

# temporary or permanent

Once I was sitting in an overstuffed chair at Barnes and Noble,  
on my cell phone, talking to my student loan company.  
They wanted to know why I wasn't making any payments.  
They were nice about it though.  
I told them I was disabled,  
acutely aware that anyone could overhear.  
And they asked, "Is it temporary or permanent?"  
I fell into silence for a moment.  
"Ma'am," the voice said, "is it temporary or permanent?"  
"I hope it isn't permanent," I said.

And that was the heart of it: what would become of me  
if it were permanent?  
Many times my intelligence has been listed  
as one of my strengths on my treatment plans.  
I couldn't tell where my intelligence was getting me,  
but I was bright enough to be excruciatingly aware  
that my life was in serious trouble.

I suppose quadriplegia would be considered  
a permanent disability,  
and something like a broken ankle,  
a temporary disability.  
Mental illness lies somewhere in the muddy middle.  
Even when it is no longer likely  
that a person will improve  
it's still possible.

I still liked going to Barnes and Noble then.  
I didn't go merely out of habit,  
but because that's where the books were.  
Books equaled answers,  
and answers equaled the freedom to fly away from this life  
from the question of whether my disability was  
temporary or permanent.  
Until the questioners intruded  
again.



# THE VISION THING

MARY KAY MCGILTON

Of all the things that have changed at People Incorporated over its 40 years, there's one that's remained constant—the idea of respect for our clients. Even back in the 1970s, way before the idea of “recovery” in mental health became the norm, there was an innate belief at People Incorporated that people with mental illness could and should be encouraged to work towards recovery, whatever that means for each individual. There's always been a sense that we will try whatever it takes to help a person move forward, even if progress is slow. People Incorporated has always been willing to walk alongside each individual, giving them opportunities and guidance so they can achieve their goals and live meaningful lives.

That idea of respect—seeing each person's potential and working in partnership with them—is what makes People Incorporated so exciting. It's an incredibly empowering vision, both for us and for the people we serve. It gives us at People Incorporated the energy and enthusiasm to take on some of the most difficult challenges, and create new ideas and new ways of working. It's so rewarding to help our clients make their own way in the world, whether they need a lot of support or just a little. But for the people we serve, the idea of respect is fundamental to recovery. Being respected for who you are—for your dreams and aspirations—and having a voice and a choice is what makes us human and gives us hope for the future. So whether we're celebrating 40 years or 140, that's the one “thing” at People Incorporated I hope will always stay the same.

Mary Kay McJilton, Vice President, has been on the People Incorporated staff since 1978.

Artwork: Stephanie Jones, *Wish II*



PEOPLE LIKE  
CHARLOTTE

TIM BURKETT

(Not a portrait of Charlotte)

*Tim Burkett  
2009*

*I realized, in preparing this piece, how profound the impact of stigma has been on my own life and family. –Tim Burkett*

My mother called me once from California, crying. “Why is it that every time Charlotte is really upset or really needs support, they lock her up? And why do I have to feel like I’m visiting a criminal when I go to see her?”

Charlotte, my sister, has suffered from schizophrenia—and stigma, just like people with mental illness throughout time. In the middle ages, they were “possessed by the devil,” and awful things were done to them, like boiling them in oil. In the Enlightenment, “the age of reason,” mental illness became a moral disease. People with mental illness must have done something wrong, weren’t living right. And Freud claimed it was due to bad parenting—mothering in particular.

My family, especially my mother, suffered tremendously because of stigma. My brother, Chip, committed suicide at age 30. He was treated for alcoholism, but never for the underlying depression it masked. Charlotte later gave birth to a girl and the welfare department immediately snatched the baby away from her. When she became pregnant a second time, her husband, intent on not losing a second child, moved with her into a rural area so she could give birth. Now 21, that boy is wondering where his sister is. My mother, who was a Stanford graduate and social worker, was shut out of any discussions about what to do with my sister and my brother. The doctors and other professionals wouldn’t talk to her. She thought she’d done something wrong, and was so ashamed of it she wouldn’t talk to me about it, either.

I once said to my mother, “Wouldn’t it be nice if people would give money to support Charlotte?” At the time there were few nonprofits, especially those serving people with mental illness. My mother worked as a volunteer for a “retarded” children’s guild and it brought in a lot of funds. She replied, “Oh nobody would ever give money to support people like Charlotte.”

The research has been in for 30 years now, saying these are brain diseases. And little by little, stigma is beginning to wane. But it takes a long time for a culture to catch up with research. We’ve made a good start—you can see it with the growth of the People Incorporated family.

When I came to People Incorporated in 1995, we had about 40 donors. Now we have over 1,000. This tremendous community support gives us the power to tackle stigma at its roots by showing how things can be done differently—that people with mental illness can lead productive, meaningful lives. To expose the grave injustices that still affect people with mental illness and provide effective treatments to support them in the community. To show people with mental illness that we, as a community, care. That’s what our name means to me. We are people who care about the well-being of people who have been considered less than human for far too long.

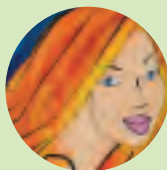
People like Charlotte.

M. Tim Burkett, Ph.D., is the CEO of People Incorporated.

Artwork: Gayle Wyant, *Red-headed Girl in Blue*

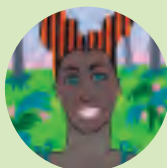
# WE WHO SHARE A VISION

1969



People Incorporated gets its start at Dayton Avenue Presbyterian Church in St. Paul; later joined by Central Presbyterian, Merriam Lexington Presbyterian, North Como Presbyterian, and Church of the Way, Shoreview.

1970



People Incorporated opens its first program, Dayton House.

1977



First residential program in the U.S. for people who are Deaf or Hard of Hearing and have mental illness.

1983



First residential treatment program in Minnesota for women with mental illness.

1988



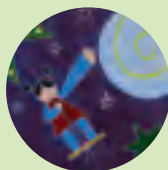
First program in Minnesota to help people with seizure disorders live independently.

1991



First home health program in Minnesota designed specifically to serve people with mental illness.

1993



First crisis residence in Minnesota for people with mental illness.

1994



First Artability art show for people with mental illness.

First outreach program in Minnesota for people with mental illness living without shelter.



1995

First drop-in center in Minnesota for people who are Deaf or Hard of Hearing and mentally ill.



1996

First residential program in the East Metro serving people who mask their mental illness with chemical use.



2001

Launch of People Incorporated's first capital campaign, and the first in Minnesota to support services to people with mental illness — \$5.4 million goal.



2002

First Integrated Service Network in Minnesota for people with mental illness.



2003

First Safe Havens in Minnesota for people with mental illness living without shelter. People Incorporated receives \$400,000 Kresge Foundation Challenge Grant.



2004

First successful People Incorporated capital campaign concluded—\$5.6 million raised; first successful capital campaign in Minnesota supporting people with mental illness. People Incorporated wins five awards for its work, including “Provider of the Year” by the National Alliance on Mental Illness of Minnesota (NAMI-MN).



2005

People Incorporated raises over \$1 million in its Annual Campaign. Next Steps program serves mothers with mental illness and their young children.



2007

6,400 clients served in more than 40 programs. 40th Anniversary Celebration.



2009

ARTWORK CREDITS: Mary Collins, Molly Corrick, Gail Harbeck Christi Furnas, Audrey Bernard, Julie Krogfuss, Stephanie Jones, Dena Nickel, Stephanie Jones, Gayle Wyant, Vue Vang, Faye Buffington-Howell, Melissa Lewis, James Rettger, Mare Kusz, Lori Knutson

# WE THE PEOPLE ARE PEOPLE INCORPORATED

DESIGN  
ThinkDesign Group  
CONTENT DEVELOPMENT  
& WRITING  
Nancy Blakestad  
ARTWORK PHOTOGRAPHY  
Rik Sferra



MENTAL HEALTH SERVICES

317 York Avenue, St. Paul, Minnesota 55130  
651.774.0011 voice 651.774.6535 tty 651.774.0606 fax [PeopleIncorporated.org](http://PeopleIncorporated.org)

# WE THE PEOPLE ARE PEOPLE INCORPORATED

Dear Friends,

Reaching our 40th year is quite a milestone, and it's fun to take time to celebrate. But anniversaries simply mark the passage of time. We prefer to focus on all the people who helped get us here—our donors, staff, and volunteers. It is your hard work, dedication and determination to forge ahead that has created this people-power organization named People Incorporated. We have so much of which we can be proud, but even more for which to be grateful.

Above all, the story of our first 40 years is the story of the thousands of people we've served. It is for them that this is truly a celebration—of independence, of acceptance, of hope. We are especially thankful to them for teaching us so much about how best to serve them. It is to them that we dedicate our 40th anniversary.

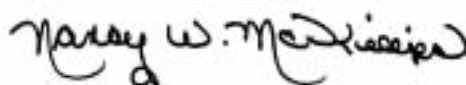
The year 2008 was marked by continued success on all levels. We served more than 6,400 people, and opened an important program, Montreal Courts, that offers apartment living with 24/7 services for people with mental illness and other significant medical needs—people who otherwise would probably be living in nursing homes. The past year also involved many important collaborations with other community agencies and health care providers, setting the stage for new things to come as we seek to bring mental health care into the mainstream. You can read more about these on the following pages.

As we embark on our next 40 years, we hope you will continue to partner with us in our mission, whether it's through monetary gifts, volunteer time, or getting the word out in the community. The current economic downturn means focusing on essentials, but for People Incorporated, that simply means continuing to do what we do—providing essential services and developing new ones to help people who otherwise wouldn't have anywhere else to turn. Stigma still robs people with mental illness of the care they need and deserve. Today's economic challenges only lead us to redouble our efforts to help them. Please join us—because it's you who make us People Incorporated.

Sincerely,



M. Tim Burkett, Ph.D., CEO

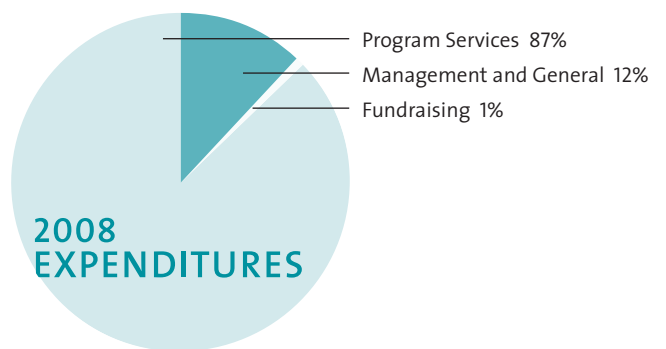
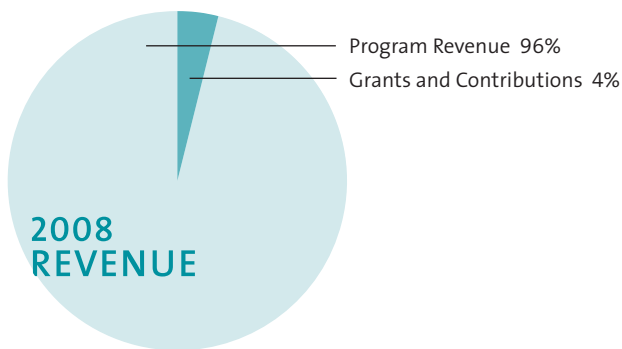
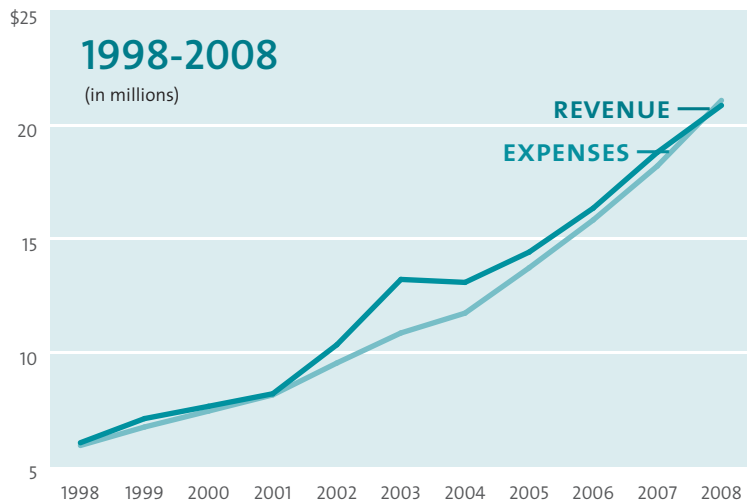


Nancy McKillips, Board President

# PEOPLE INCORPORATED 2008 FINANCIAL REPORTS

## 87 CENTS OUT OF EVERY DOLLAR GIVEN GOES DIRECTLY TO CLIENT SERVICES

We raised \$763,025 from 943 individuals, foundations, and corporations during our Annual Campaign. Thanks to all of you for your generous gifts throughout the past year—gifts that helped keep our mission strong!



A copy of the audit report, audited financial statements, and related disclosures are available upon request by calling Lori Anderson at 651-774-0011.

## STATEMENT OF FINANCIAL POSITION

as of December 31, 2008 (dollars in thousands)

### ASSETS

Cash and Cash Equivalents	\$ 2,081
Accounts and Pledges Receivable	3,185
Investments	861
Property and Equipment, Net	7,716
Other Assets	409
<b>Total Assets</b>	<b>\$ 14,252</b>

### LIABILITIES

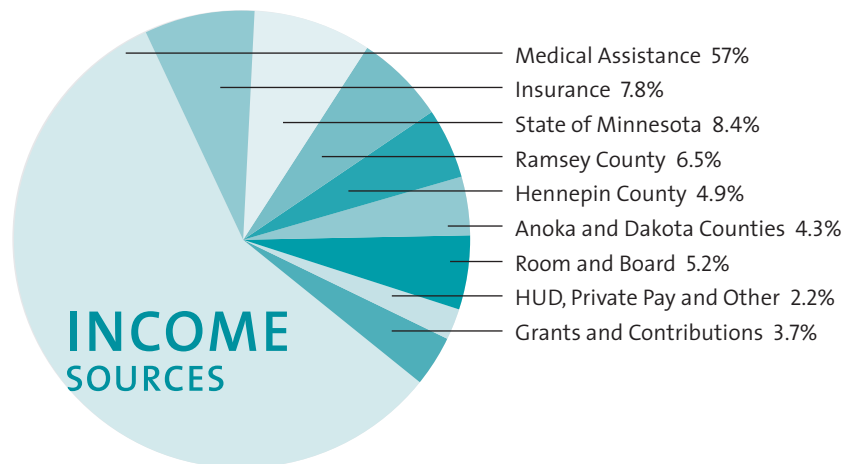
Accounts Payable and Accrued Expenses	\$ 1,924
Other Current Liabilities	341
Long-term Debt	2,734

### NET ASSETS

Unrestricted – General	2,845
Unrestricted – Investment in Property	5,224
Unrestricted – Long-Term Investments	251
Temporarily Restricted	323
Permanently Restricted (Endowment)	610
<b>Total Liabilities and Net Assets</b>	<b>\$ 14,252</b>

## PARTICIPANTS SERVED 2008

Case Management	1,055
Crisis Management	3,376
Drop-In Centers	667
Homeless Services	330
Living Skills	797
Residential	263
<b>Total</b>	<b>6,488</b>



## GIVING TO PEOPLE INCORPORATED

Everything we do depends upon donations from friends like you—private funding gives us the ability to act quickly when needs arise, and to develop innovative new programs. There are many different ways to give. Checks may be mailed to us at the address on the back cover, or you can send a gift by credit card via our website at [www.PeopleIncorporated.org](http://www.PeopleIncorporated.org) (click Donate on the home page). For further information about in-kind gifts, matching gifts, gifts of securities, or planned giving, please contact Barbara Nichols, Vice President, Resource Development, at 651-288-3504 or [barbara.nichols@peopleincorporated.org](mailto:barbara.nichols@peopleincorporated.org). Thank you for supporting our work!

# 2008

## HIGHLIGHTS

**OPENED MONTREAL COURTS** in collaboration with Ramsey County Community Service Department, a 20-unit permanent supported housing program offering customized apartment living with services available 24/7 for people with mental illness and other significant medical needs.

**DEVELOPED PROJECT RECOVERY** in collaboration with Transition Homes to provide community outreach to homeless people with mental illness who are chemically addicted.

**OPENED COLONIAL HOUSE** in Dakota County, a residential program serving adults with mental illness and other disabilities.

**SELECTED AS TRAINERS/CONSULTANTS** by the Department of Human Services, providing training and consulting services in Mental Illness Management to 20 agencies in 2008.

**COLLABORATED ACTIVELY** with hospitals, counties, the state, and other mental health providers to improve our support for people in mental health crisis—part of our ongoing effort to shift the treatment paradigm from hospitalization to assertive and compassionate community-based support.

**SECURED TEN LONG-TERM HOMELESS RENTAL VOUCHERS** from the Minnesota Housing and Finance Agency, helping us to deliver additional affordable housing to homeless adults with mental illness.

**OBTAINED CONTRACTS WITH ALL OF THE HMOs IN THE STATE** to provide mental health services, an important step for our financial viability, following legislation that permits HMOs rather than counties to contract with mental health service providers.

**IMPLEMENTED OUR TELEVIDEO SYSTEM** to provide training and consultation to our own staff and other service providers across Minnesota.

**SOLD MORE THAN \$9,000 WORTH OF ART** at our Artability art show for people with mental illness (90% goes to artists, 10% goes to the Artability program).

**RAISED \$29,000 IN OUR “HOME FOR THE HOLIDAYS” EVENT** to furnish People Incorporated programs.

**RAISED \$763,025** from 943 individuals, foundations, and corporations in our Annual Campaign.

# DONORS

## 2008

### HERITAGE CIRCLE

Individuals who made plans for future gifts

Anonymous  
Bilinkoff, Joan  
Burkett, M. Tim  
Carlson, Lee/Ann  
Drew, Alden/Mimie Pollard  
Eckhardt, Linda  
Gardner, Leslie/David  
Garretson, Don/Adele  
Gross, Susan/Bert  
Hogan, Jan  
Jones, Louise  
Lange, Sidney/Dick  
McJilton, Mary Kay/Charles  
McKillips, Nancy  
McMillan, Mary (Molly) Bigelow  
Nichols, Barbara  
Schneider, Allan/Deborah  
Swanson, Arlene  
Vander Zanden, Joe/Mary  
Wray, Nancy

### BEQUESTS

† Fredrick & Lillian C. Schwarz Charitable Trust

### YORK STREET SOCIETY

Those who demonstrate commitment to our mission through large gifts for two years or more

Baillon, Caroline/John  
Boss, Andy  
Burma, Lance/Julie  
DeBaut, Elizabeth/David Hartwell  
Drew, Alden/Mimie Pollard  
Duddingston, Joan  
Hogan, Jan  
Huss, John/Ruth  
Klas, Robert/Sandy  
Kunin, Connie/Daniel  
Mairs, George/Dusty  
Martin, Fred  
McJilton, Mary Kay/Charles  
McMillan, Mary (Molly) Bigelow  
Momsen, Eileen  
Nicholson, Dick/Nancy  
Parish, Robert/Betsy  
Robertson, Cal/Kristin  
Rogers, John/Lois  
Schneider, Allan/Deborah  
Stark, Trisha

### CORPORATIONS, ORGANIZATIONS & PLACES OF WORSHIP

Advent United Methodist Church  
Ameriprise Matching Gift Program  
Bremer Bank Nonprofit Banking  
Central Presbyterian Church  
Christ Lutheran Church Women  
CIGNA  
City Wide Cab  
GoodSearch  
Gray, Plant, Mooty  
Han-Koe Co.  
HealthPartners/Regions Hospital  
HOM Furniture, Inc.  
The House of Hope Presbyterian Church  
HSBC Matching Gift Program  
Huss Foundation  
Kallas & Associates  
"LOL Buttermasters"  
Toastmasters Club  
Macalester Plymouth United Church  
Milliman  
NAMI – Hennepin County Affiliate  
North Como Presbyterian Church  
North United Methodist Church, Faith Circle  
Park Midway Bank  
Phoenix Marketing Group, Susan Ryan and Dean York  
W. C. Rasmussen – Northeast Bank Foundation  
Ramsey County Department of Human Services  
Ryan Companies US, Inc. Matching Gift Program  
St. Mary's Greek Orthodox Church  
Stanton Group  
Travelers Community Action Awards Program  
United Health Group Employee Giving Campaign  
Unity Church – Unitarian  
Westminster Presbyterian Church  
Xcel Energy Match Program

### FOUNDATIONS

The Diane Ahrens Fund of The Saint Paul Foundation  
AMRTC Auxiliary – Rose Fund  
Fred C. and Katherine B. Andersen Foundation  
Katherine B. Andersen Fund of The Saint Paul Foundation  
Hugh J. Andersen Foundation  
Sally A. Anson fund of The Akeny Foundation  
Gordon and Margaret Bailey Foundation  
The Beverly Foundation  
F. R. Bigelow Foundation  
Boss Foundation  
Burdick-Craddick Family Foundation  
Charlson Foundation  
Citi Foundation  
Vance C. DeMong Charitable Trust  
The Dill Family Charitable Foundation of the Minnesota Community Foundation  
Henry Doerr Memorial Fund of The Minneapolis Foundation  
Edina Realty Foundation – Grand Avenue Office  
Eli Lilly and Company  
The Family Memorial Fund of The Minneapolis Foundation  
The Fawcett Family Fund of The Saint Paul Foundation  
The David E. Feinberg Family Fund of The Saint Paul Foundation  
The David R. and Elizabeth P. Fesler Fund of The Saint Paul Foundation  
Gray Plant Mooty Foundation  
Mary L. Hammerly Fund of The Saint Paul Foundation  
Peter J. King Family Foundation of The Saint Paul Foundation  
Drake J. and Nan P. Lightner Fund of The Saint Paul Foundation  
McCarthy-Bjorklund Foundation  
Metropolitan Regional Arts Council\*  
Eileen M. and Richard E. Momsen Fund of The Saint Paul Foundation  
Myers Foundation, Inc.

Mark and Jackie Nolan Family Fund of The Saint Paul Foundation  
Open Your Heart To the Hungry and Homeless  
Constance S. Otis Fund of The Saint Paul Foundation  
The Pentair Foundation, on behalf of Pentair Pump-Hydro  
The Patrick and Alice Rogers Family Foundation of The Saint Paul Foundation  
The Jay and Rose Phillips Family Foundation  
Piper Family Fund of The Minneapolis Foundation  
Prudential Foundation  
W. C. Rasmussen – Northeast Bank Foundation  
Revord Family Fund of the Catholic Community Foundation  
Ten Times Ten Foundation  
University of Minnesota – Community Shares of Minnesota  
Archie D. & Bertha H. Walker Foundation  
The Wasie Foundation  
John and Renata Winsor Fund of The Minneapolis Foundation

### CREATOR

Gifts of \$5,000+

Baillon, Caroline/John  
Burma, Lance/Julie  
DeBaut, Elizabeth/David Hartwell  
Drew, Alden and Mimie Pollard  
Duddingston, Joan  
Hogan-Schiltgen, Jan  
Huss, John/Ruth  
Jones, Lucy Rosenberg  
Klas, Robert/Sandy  
Kunin, Connie/Daniel  
Mairs, Dusty/George  
Martin, Fred  
McJilton, Mary Kay/Charles  
Momsen, Eileen  
Parish, Robert/Betsy  
Robertson, Cal/Kris  
Rogers, John/Lois  
Schneider, Deborah/Allan  
Stark, Trisha

## BUILDER

Gifts of \$2,500 – \$4,999

Anonymous (2)  
Aby, Katherine Joy  
Burkett, Ph.D., Tim  
Buscher, Catherine/Herbert  
Garretson, Don/Adele  
Klas, Linda/Robert  
McMillan, Molly  
Nichols, Barbara  
Nicholson, Dick/Nancy  
Nicholson, Todd/Martha

## FOUNDER

Gifts of \$1,000 – \$2,499

Anonymous (3)  
Anderson, Jan/Paul  
Barrett, Marge/Tom  
Beeson, Rick  
Calott, Peter/Joan  
Carlson, Lee/Ann  
Frels, William/Bonita  
Gross, Susan/Bert  
Guthrie, Carolyn  
Hart, Pat  
Johnson, Philip/Margee  
Karels, Bob/Sandy Robinson  
Lange, Sidney/Dick  
Lentz, David/Sharon  
Likins, Vera  
Litecky, Sue  
Lowe, Tom/Mari  
Mayer, Catherine  
Moga, Moira/Dan  
Nicholson, Ford/Catherine  
Nusman, Benjamin  
Olson, Dr. David/Karen  
Peter, Jim/Donna  
Rorke, Pat/Herb  
Rose, Ruth  
Roszak, Linda  
Ruth, Jack  
Satorius, Linda  
Schubert, Rolf/Karin  
Sponheim, Scott/Sarah  
Spring, William  
Staffenson, Betty  
Webster, Elizabeth  
White, Mary/James

## VISIONARY

Gifts of \$500 – \$999

Anonymous (4)  
Adams, Jim/Julia  
Anson, Peter/Sally  
Betchwars, Jeff/Martha Kvanbeck  
Delaney, John/Mary  
Dixen, David  
Fesler, B. J.  
Flanigan, William/Nancy Zingale  
Gray, Katherine/Gary Schoener  
Heegaard, Lucy/Jeff  
Hennesy, Bob  
Henriksen, Rich  
Kaemmer, Art/Martha

Kane, Patricia  
Kluznik, John  
Lancaster, Richard/Reta  
McJilton, Genevieve  
McKillips, Nancy  
Needham, Barbara  
Ott, Mary Lou/Gene  
Peterson, Dale/Jeri  
Rose, Ruth  
Sanger, Karen/Steve  
Seeb, Patrick  
Shah, Seema/Jed Burkett  
Sheets, Debra  
Simpson, Scott/Yin  
Smith, Chris/Tracey  
Tidlund, Donald/Carolyn  
Wahmanholm, Karen  
Westermeyer, Joseph/Rachel  
White, Joan  
Wray, Nancy

## PARTNER

Gifts of \$200 – \$499

Anonymous (2)  
Aeppli, Dorothee/Alfred  
Anderson, Denise  
Anderson, Jamie  
Anderson, Karen  
Armstrong, Katie  
Arneson, Jr., Ted/Ruth  
Baker, Karen  
Barnwell, Anne  
Beard, Nancy  
Bierbrauer, Carol  
Boelter, John/Barb  
Braun, Richard  
Brend, Jodie  
Broussard, Marilyn  
Budzinski, Brett  
Burchard, Tracy  
Burlingame, Luana  
Burns, Robert/Susan  
Burrock, Rick/Barb  
Carney, Gayle  
Carroll, Darlene  
Conklin, Barbara  
Conley Braun, Jayne  
Conlin, Joe  
Coyne, Michael  
Darling, Linda  
Davis, Eunice  
Davis, Thomas E.  
Dillon, Nancy  
Eckhardt, Linda  
Eddy, Jeanne  
Elsass, Douglas/Susan  
English, Mark Alan/Thomas  
Linker  
Felipe, Peter  
Flanigan, Barbara  
Fleming, Carole/Peter  
Force, Casey  
Forster, Barbara  
Freemore, Bob  
Fuechtmann, Ralph

Fuller, Lynn/Landon  
Fystrom, Kate  
Godette, Nikita  
Gould, John/Mary  
Gramlich, Amanda  
Hauser, Mary/Louis  
Heidebrecht, Wanda  
Heie, Thomas  
Hennen, Heidi  
Herman, Diane/John  
Huber, Linda  
Ingram, Robert  
Johnson, Charles/Ava  
Johnson, Cullen  
Johnson, Dick/Barbara  
Johnson, Donna Rae  
Johnson, Harry/Marian  
Jorgensen, Charles/Sally  
Kallevig, Gary  
Kazmierczak, Marge/Jerry  
Kelen, Miriam/Erwin  
Knieriemmen, Rev. George  
Kramer, Joel/Laurie  
Kryzanowski, Ed/Sandy  
LaBerge, Peter/Laura  
Lallier, Louise/Ralph  
Lammi, Michael/Sharon Gorney  
Lines, William/Corinne  
Lowe, Anne  
Lundborg, Nancy  
Lynn, Anna  
MacDonald, Dr. Angus  
Madsen, Joan  
Maltese, Mary Clare/Jorge Granja  
Margolis, Bob/Janet  
Markusen, Pam  
Mattson, Patricia/Richard  
McClendon, Stacy  
McFarland, Dick/Joyce  
McNeely, Jr., H. G.  
McNeill, Maryann/James  
Melby, Jamie  
Meyer, Geoff  
Miller, Keith  
Moe, Roger  
Nelson, Miles/Nancy  
Niblick, Mark/Sandra  
Nordin, Rob/Nancy Kosciolk  
Novak, Gregory/Joan  
O'Brien, Sarah  
Peterson, Bill/Lori  
Reinhart, Susan/Charles  
Revord, Mr. and Mrs. Richard  
Rhode, Clarence/Isabelle  
Riley, Felicity  
Root, Michael  
Sachs, Elle  
Savitt, Steven  
Schaffer, Dr. Jack/Jan  
Seesel, Smily  
Shaw, Elizabeth  
Sorensen, Niels/Carol  
Spear, Cathy/Edward  
Stirtz, Larry  
Stokes, David  
Student, Kay/Richard

Swanson, Ann/Brad  
Swanson, Arlene  
Sweeny, Jill  
Swenson, Jeanette/Greg  
Thames, Jane  
Thomson, Mary Ida  
Vigness, Jamie  
Wahl, Rosalie  
Weigelt, Jennifer  
Weyerhaeuser, Nancy/Ted  
Woelfel, Becky/Jerry

## SUSTAINER

Gifts of \$100 – \$199

Anonymous (4)  
Agee, Howard/Lorraine  
Allen, David/Barbara  
Anderson, Lori  
Anderson, Merna  
Amundson, Gordon/Susan  
Shelton  
Beaumont, Leslie  
Beebe, Lloyd  
Bender, Elizabeth  
Bertsch, Bethany  
Boss, Andy/Linda  
Bouza, Erica  
Brick, Daniel  
Broucek, James/Carol  
Brown, Jamil  
Bucholz, Melissa  
Bulman, Charles  
Bush, Robert/Annabelle  
Bryant, Lavern  
Carrel, Jerri  
Chapman, Natalie  
Chutich, Michael/Susan Gretz  
Clark, Susan  
Clary, Mary-Louise/Bradley  
Constable, Jill/David  
Cram, Katherine  
Cullen, William  
Cumming, Diana/Keith Liuzzi  
Cushmore, Ted/Carol  
Cyptar, Anastasia  
Dahlberg, David  
De Coster, Anne  
DeSanto, Paula  
DiGiovanni, Vicky/Jo  
Drake, Harry  
Drew, Joshua  
Durand, Linda  
Dye, Carol/Robert  
Eager, Jennifer  
Fiola, Janet/Doug  
Flegel, Cheryl  
Florest, Annemarie  
Ford, Ken/Barbara  
Frederick, Barbara Ann/Dennis  
Fremder, Jody  
Friesen, Shawn  
Fuechtmann, Herman  
Fuechtmann, Karen  
Gabe, Nursel/Chuck Neuman  
Gilmore, Kyler

Goetz, Frederick/Mary  
Goldberg, Dr. Stanley/Luella  
Gordon, Gregg  
Gotfredsen, Jim  
Graber, John  
Grace, Thomas/Grace  
Granda, Amy  
Gruidl, Mike/Cathy  
Haben, Julie/Bob  
Hagen, Dean/Elizabeth  
Hagnander, Jr., O. C.  
Hanson, Barbara/Kent  
Hanson, David/Mim  
Harneck, Lyle  
Hawn, Liz/Van  
Hesch, Eileen/John  
Higinbotham, Joan  
Hinchee, Scott  
Hoschouer, Rebecca  
Howard, Robert  
Howe, Jessica  
Hull, Margaret  
Hummer, Alice  
Iruene, Boma  
Janisch, Frank/Barbara  
Jarrett, Mark  
Johnson, Bromley  
Johnston, Ruth  
Jones, David/Louise  
Jones, Jovita  
Kaas, Merrie  
Kaiser, Kathleen/Kurt  
Kashtan, Judith/Clifford  
Koehnen, Joel/Julie Hanson  
Koehler, Mary Beth/David  
Laham, Trish/Darrell  
Langer, David/Ann  
Lanier, Holly  
Lewis, Jodi  
Liebenstein, Beverly/Donald  
Lovell, Sandra  
Lowell, Josie  
Luikart, Frances/Sharon  
Madole, Steven  
Maghakian, Harry/Judy  
Mahle, Kathi Austin  
Malkerson, Sherman  
Manthey, Marie  
Martin, Sarah  
Mason, Vivian  
McCall, Bruce  
McCormick, Colleen/Michael  
McNeill, James/MaryAnn  
Mebust, Ahavah  
Melby, Nichole  
Menge, Peter/Sandra  
Meppen, Alice  
Miron, Sheree  
Momsen, Bob/Yvonne  
Moore, Susan  
Moris, Angie  
Murray, Florence  
Nelson, Dee Anne/Robert  
Nelson, Eric  
Nelson, Lee/Ruth  
Nightingale, Dr. Edmund

Nyce, David  
Oliver, William/Sheila  
Ollila, Clifton  
Olson, Lynn/Frank Stone  
Olson, Marian  
Olson, Mary  
Olson, Muriel/Roger  
Ostby, Wendy  
Paper, Janet S.  
Paschke, Robert/Julie  
Pilrose, Mark/Paula  
Pohren, Nancy  
Potter, Alan/Judy  
Randt, Chad  
Rank, Brian  
Renwick, Sue/Don Burns  
Riley, Claudia  
Rivers, Nicholas  
Rockenstein, Walter/Jodell  
Rose, Kathryn  
Rostad, Dale/Staney  
Rousseau, Alan/Pat  
Rudnick, Lawrence/Barbara  
Rule, Geri/Sterling  
Ruth, Amber  
Scher, Sam  
Scherber, Dennis/Winnie White  
Schick, Christy  
Schmid, Mary/Jim  
Schoenecker, Kathleen  
Schomberg, Misty  
Schuh, Jackie  
Scott, Christian  
Senander, Jack  
Shapiro, Joel/Cindy  
Simmons, Judy  
Slaughter, Nancy  
Smith, Erika  
Sponheim, Paul/Nell  
Stankovsky, Branislav  
Stark, Gene/Jean  
Stohlmann, Stephen/Jeanette  
Strand, Amy  
Sundet, Paul/Jean  
Syme, Diane  
Teisberg, John/Jacqueline  
Thomas, Patina  
Thompson, Robert/Carolyn  
Tinderholm, Katie  
Turner, Russell  
Turvey, Matt  
Trembley, Neil  
Treuchel, Robert/Lois  
Vellenga, James/Kathleen  
Verret, Paul/Carolyn  
Wallace, Blanch/Gordon  
Walli, Kevin  
Wallin, Maxine  
Watters, Ellen  
Weinand, Denise  
Welna, James/Susan  
Welshinger, Susan  
Wesee, Irene  
Westrom, John  
Wright, Sharon/Don  
Yaffe, Belle/Harry

Young, Ross  
Zimmerman, Jerianne  
Zook, Jeanine/Stuart

## FRIEND Gifts to \$99

Anonymous (19)  
Abderholden, Susan/Lee Keller  
Abramson, Katelyn  
Adair, Jacqueline  
Adams, Richard  
Adeleye, Temitope  
Aggerbeck, Donald  
Alberg, Chance  
Alcorn, Jill  
Allen, Pat/Norman  
Amosu, Olukayode  
Anderson, Al/Joyce  
Anderson, Allison  
Anderson, Charles/Adair  
Anderson, David/Virginia  
Anderson, Donna  
Anderson, Sen. Ellen  
Anderson, Joyce L.  
Anderson, Rashelle  
Andreason, Shirley  
Andrus, Julie  
Artan, Liban  
Aschburger, Julia  
Asp, Nicole  
Ato, Larai  
Autio, Rebecca  
Bacon, Michael  
Ballard, Tamieko  
Balmer, Michael  
Barley, Nichole  
Barnett, Teddie  
Berg, Barbara  
Bates, Vickie  
Bavlnka, Amanda  
Baysden, Susan  
Beagan, Mary  
Beebe, David  
Belevender, Jeff  
Benson, Joanne/John  
Bergman, Eileen  
Bergstrom, Jane/Howard  
Berns, Lois  
Biderman, Ph.D., Rebecca  
Bishaw, Robert  
Black, Jesse/Ingeborg  
Blakestad, Ph.D., Nancy  
Blumer, Barbara/Timothy Hoel  
Blunt, Suzanne  
Bolch, Ellie/Jim  
Botello, Monique  
Bratt, David/Susan  
Breuer, Kathy  
Brewer, Daniel  
Brink, Darrell/Helen  
Brooks, Heidi  
Brown, Talesha  
Brumer, Adena  
Bruss, Jason  
Buehler, Charles/Ute  
Burriss-Brown, David/Sharon

Butler, Bill/Ellie  
Butler, Daniel/Sherry  
Butterwick, Darrell  
Cain, Clifford  
Cardarelle, Dawn  
Carlson, Gwen/Dayton  
Carlson, Rolland/Diane  
Carlson, Wayne  
Carr, Eddie  
Carr, Martez Donta  
Carroll, Amanda  
Casar, Daniel  
Casper, David/Phyllis  
Charles, Cassandra  
Chen, Heidi/Thomas Knickelbine  
Chervany, Norm/Carol  
Choi, Keith  
Christensen, Elizabeth  
Clarke, Jean/Richard  
Coffin, Maria/Phil  
Cook, Debbie Jo  
Cooke, Betty  
Cooper, Carolyn  
Cooper, Jacob  
Costello, Kristy  
Corrick, Molly  
Cowan, Jodi  
Cox, William/Fran  
Craine, Esther  
Cross, Marleen  
Cross, Sarah  
Cunningham, Jim  
Dahl, Kelsey  
Dale, Roberta/Luther  
D'Angelo, Melinda  
Damon, Lisa  
Daniels, Lauren  
Danielson, Jodi  
Davis, Andrea  
Davis, Rebecca  
Davitt, Jack/Marlene  
DeCoster, Jeff/Margaret  
Dehnke, Leon  
Delaney, Shawn  
Delgado, Amy  
Delsing, Donald/Maureen  
Dempsey, Tammy  
Dethners, Susan/Gordon  
Dexter, Molly  
Dilworth, Isaac  
Dolan-Ziff, Lillian/Stephen Ziff  
Dralle, Anna  
Dreesen, Anna  
Duncan, Warren  
Dutcher, Kevin  
Dykstra, Mary  
Eaton, James  
Edwardson, Phillip/Sandra  
Egge, Jenna  
Eicher, Joanne  
Eilers, Cathy  
Ellickson, Amy  
Enstrom, Sally  
Erdahl, Lowell/Carol  
Erickson, Betsy  
Ernst, Betty/Henry

Eskew, Charles	Hubbard, Joann	McQuaid, Antoinette	Sailors, Julie
Fahngon, Jesse	Huttenmaier, Mildred	Meany, Ann/Lance Henderson	Scanlon, Alexis
Faix, Dr. Thomas	Iacono, William/Jane	Meehl, Andrea	Schaefer, Barbara
Feahn, Leroy	Jackson, Kristina	Mee-Lee, Dr. David	Schmidt, Bernie
Felder, Alison	James, Nancy Ann	Megard, Robert/Roberta	Schneegans, Simone
Fenton, Jeff	Japs, Clifford/Mary	Melroe, Shelly	Schneider, Sherri
Fikis, Dawn	Johansmeyer, Ann	Mendez, Angela	Scholz, Bob/Fran
Fisher, Gina	Johnson, Erin	Merrigan, Mike/Marie	Schultz, Kimberly
Fisher, Thomas/Claudia	Johnson, Jocelyn	Molloy, Nancy	Schwartz, Shanada
Wielgorecki	Jones, Louise	Monserud, Daniel	Schwert, James/Caroline
Foley, Jay	Juaire, Heather	Montgomery, Jimmy	Seleski, Rebekah
Forcier, Louis	Juckel, John	Mooers, Geraldine	Selvaggio, Joe
Ford, Judith	Kamphenkel, Audrey	Moon, Jennifer	Sexton, Sarah
Fortunak, Sharon	Kane, Michael	Morales-Flores, Jordi	Shakman, Susan/Steve
Fredrickson, Joshua	Kellett, Donald/Melva	Moree, Julie	Sheeran, Jessie
Frick, Heather	Kelly, Steve/Kris	Murphy, Margaret/James	Sherer, Russell
Frost, David	Kinson, David	Muthiaru, Samuel	Shippee, Elizabeth
Gage, Andrea	Klein, Kelly/Tom White	Myhra, Elizabeth	Sibenaller, Carilynn
Garner, Frank	Kleven, Krystle	Myhre, Lisa	Siebert, Amy
Gibson, Lawrence/Lois	Kloncz, Gary/Marilyn	Narog, Paul/Katherine	Simonet, Dr. Thomas
Giles, Maisha	Knowlton, JoAnn	Nelson, Edwin/Elizabeth	Simpson, Ray
Gilsdorf, Paul	Kobilka, Giles/Mary	Neraas, Julie	Sjoquist, Keith/Nancy
Gilsrud, Justin	Koch, Marilyn	Nesbit, Mark/Deb	Slaten, Connie/Don
Glaze, Deryl	Koens, Pamela	Newton, Kenneth/Mary	Smeby, Keith/Constance
Goodell, Carolyn	Kost, Danielle	Nicklow, Bill/Libby	Smith, Carrie
Goodrich, Richard/Laura	Kot, Rachel	Njema, Kenneth	Snyder, Richard/Judith Harmatys
Goossen, Johanna	Krabbenhoft, Carol	Ntangsi, Judith	Sprafka, Jeanne
Green, Leland/Dorothy	Krawczak, John	Nyhus, Steve	Strick, Jennifer
Green, Roger	Kropp, Justina	O'Dougherty, Dr. Patrick	Stogsdill, Keith/Mary
Greenberg, Norman/Beth	Langenfeld, Tawnie	Ogudu, Roselyn	Stone, Alan/Lou Ann
Silverwater	Larson, Carolyn	Oliver, Craig	Storey, Laura
Griefnow, Gloria	Larson, Patricia	Olson, Dana	Story, Mary
Griffin, Rachelle	Larson, Peter/Heather	Olson, Manley/Ann	Stroebel, Fred/Sandra
Grochowski, Elizabeth	Laude, Jan	Olson, Patricia	Sullivan, Maura
Hagen, Arline	LeClaire, Barbara	Ostrander, Terrance	Surman, Doreen
Haley, Clayton	Lee, Adnax	Ott, Wendy/Chuck	Swanson, Paul
Hamburger, Margaret/John	Lee, Serita	Paciorek, Thomas	Swanson, Justin
Kupris	Lee-Xiong, Mai	Parker, Ron/Janet Houck	Szczecz, Ted/Cici
Hamel, Edgar	Lemma, Nicholle	Paulson, Brian	Taylor, Deborah
Hanson, Barbara	Linda-Lang, Shelly	Perry, Dallis	Terpening, Heather
Hanson, Jerilynn	Lindquist, Russell/Avis	Peterson, Catherine/Tom	Thiegs, Patrick/Jane
Hanson, Wayne	Linne, Alisa	Peterson, Kelly	Thielen, Rebecca
Harley, Jack	Lofton, Anthony	Pierce, Diana	Thomas, Michael
Hartman, Judy	Louder, Lorrie	Pistulka, Gregory	Thompson, Joan
Hartsoe, James	Lorick, Rafeeq	Plourde, Pamela	Thorkelson, Jeffrey
Hassinger, Elaine/Richard	Lowery, Gail	Plumley, Barbara	Thyr, Roger/Kay
Haushalter, Holly	Lyman, Elizabeth/David	Poepping, Melissa	Tollefson, Allison
Hawkins, Marlys	Lynskey, John/Barbara	Poullada, Leila	Trepanier, Joseph/Dorothy
Hays, Inna	Macek, Sue	Rabe, Erik	Tschida, Janet
Helmeke, Shawn	Magée, Andraea	Radford, Mary/Robert Dana	Tulloch, John/Ann
Hemmingsen, Lindsey	Maghakian, David	Rausch, Doris Marie	Ulfeng, David/Sue
Hermansen, Bruce/Kathleen	Makowski, Melissa	Rettger, James	Ungemach, Michelle
Scierka-Hermansen	Makovec, David/Meri	Rheault, Sara	Vanbuskirk Sturgill, Julie
Hermanson, Elizabeth	Marino, Steve	Rice, Stephanie	VandenHeuvel, Heather
Hiatt, Kelsey	Marks, Jill Ann	Riehl, Mande	Vang, Shia
Hlusak, Kaye	Martin, Ann	Rimmer, Elizabeth	Velleu, Jean
Hocking, Erin	Martin, Diane	Ripley, Susan	Vizard, Ed/Ginny
Holman, John	Martin, Mary K.	Roelofs, Mike/Katy	Voigt, Mavis/Bob
Holt, Linda	Maternus, Laura	Rogers, Tom	Wagner, Danica
Honer, Katherin	Mattson, Kirk	Rohde, Rita	Waheed, Aaron
Horton, Caroline	Maves, Ralph	Roman, Cris	Walkley, Laurie
Horn, Matthew	Mayer, Lavonne	Ross, Charles	Wangenstein, Peg/Doug
Houck, Mattias	McCulloch, Bethany Jan	Rotert, David	Wanhala, Kristin
Howard, Dale/Millie	McDaniels, Kallie	Rowenhorst, Molly	Waschbusch, Eugene/Carol
Howze-El, Marsha	McKenzie, Dianne	Rupp, Ethelyn	Waters, Tracy
Hron, Donald	McNulty, Lucy	Ryg, Matthew	Weddle, Beverly

Weir, Judith  
Weisz, Shannon  
Wellman, James/Lori  
Whitlock, Shirley/Bill  
Wieland, Michael  
Wilkening, Leonard  
Williaert, Armella  
Wood, Pam  
Woodford, Gary/Patricia  
Woods, Chiquita  
Wray, Todd  
Wright, William  
Youmans, Karen  
Young, Thomas/Pat  
Yu, Lu  
Zacka, Kay  
Zellen, Angela

### IN-KIND CONTRIBUTORS

Anonymous (3)  
Anders, Mike/System Consulting Group  
Anderson, Jennifer  
Baldwin, Ryan/Heidi Nelson  
Bender, Liz  
Betz, Dallas/Roger  
Blagsuedt, Tex/Pam  
Brabec, Ashli  
Burkard, Nancy Jo  
Christianson, Louise B., Estate of Christos  
Claudia's Massage  
Coldwater Collaborative  
Cole, Laura  
Coleman, Earline  
Debaere, Kimberly  
Denault, Lester  
DeNault, Sandy  
Drees, Diana  
DuBois, Bonnie  
Dykstra, Mary  
Eckhardt, Linda  
Eicher, Joanne  
Erickson, Krystal  
Felipe, Pete/Sue  
Flaherty, Patricia  
French, Stella/Les Michels  
Gabe, Nursel/Chuck Neuman  
Grussing, Bruce  
Heyman, Kathleen  
Home Depot  
Howard, Dean  
Incarnation Lutheran Church  
James, Charlene  
Kadera, Ron/County Cycles  
Locke, Greg  
Loos, Steve  
Makowski, Melissa  
Marault, Gene  
Marcus Theatres Corporation  
McKenzie, Dianne  
Melcher, Lorraine/St. Francis Church  
Miller, Shannon  
Minnesota State Fair  
Minnesota Twins/TwinsCare  
Mitchell, Jennifer

Montgomery, Isiah  
Mork, Pam  
Mulcahey, Beth  
Nelson, Mary/St. Francis Church  
Nelson, Pamela  
Nicklow's Cafe and Bar  
Olson, Heidi  
O'Reilly, Kate  
Ortega, Margarita  
Parks, Gail  
Renaissance Festival  
Rorke, Pat  
Rosalee MacFarlane Estate  
Rose, Kathryn  
Rotary Club of Saint Paul  
Rudolph's Bar-B-Que  
Santorini's  
Schultz, Kim  
Sferra, Rik  
Shapco Printing, Inc.  
St. Francis Catholic Church  
St. John, Jim/Kathy  
Steak Knife  
Sowieja, Janice  
Sydor, Robin  
Sydor, Scott  
Thompson, Karin  
Tracy, John  
Volkman, Joan  
Wieland, Michael  
Wiley, Samantha  
Wray, Nancy  
Zengerle, Christine  
Zuhrah Shrine Circus

### IN HONOR & APPRECIATION

*In Honor of Peter Bachman and Janet Rice*  
DeBaut, Elizabeth  
*In Honor of Marge Barrett and Tom Rogers*  
Rogers, Dan/Mary Ann  
*In Honor of Mike Becklund*  
Becklund, Joanne  
*In Honor of Roger and Dallas Betz*  
Betz, Charles  
*In Honor of Greg Bourguin*  
Severson, Mary Jane  
*In Honor of Donald A. Bump*  
Cutting, Ernest  
*In Honor of Tim Burkett*  
Lampman, Gary/Sherry  
*In Honor of Robert and Susan Burns*  
DeBaut, Elizabeth  
*In Honor of Patrick Campbell*  
Guesnard, Sue  
*In Honor of Lee Carlson*  
Anonymous  
*In Honor of William Cox's 80th Birthday*  
Betz, Dallas/Roger

*In Honor of Denise Dian*  
DeBaut, Elizabeth  
*In Honor of Alden Drew's Birthday*  
Works, Jr., John  
*In Honor of Dr. Lois Hall and Anja Curiskis*  
DeBaut, Elizabeth  
*In Honor of Kent and Barbara Hanson*  
DeBaut, Elizabeth  
*In Honor of Heidi J. Hennen*  
Hennen, Linda L.  
*In Honor of Jan Hogan*  
McCulloch, Bethany Jan  
*In Honor of Margaret Johnson*  
Johnson, Andrea  
*In Honor of Sidney Lange*  
Haase, Ann  
*In Honor of Mary Kay McJilton*  
Cochran, Hiram/Liz  
*In Honor of Molly McMillan*  
Linsmayer, Christine  
*In Honor of Nancy McKillips*  
Burke, Donna  
McKillips, Patrick/Deanna Truedson  
Stubbs, Jan  
*In Honor of Susan Moore*  
DeBaut, Elizabeth  
*In Honor of Cole O'Rourke*  
Appert, John/Julie  
*In Honor of Michael Perkins*  
DeBaut, Elizabeth  
*In Honor of Jim and Donna Peter*  
Kane, Patricia  
Ott, Wendy/Chuck  
*In Honor of John Polshek of Polshek Welding*  
Carlson, Lee/Ann  
*In Honor of Dennis Scherber and Winnie White-Scherber*  
DeBaut, Elizabeth  
*In Honor of Mary White*  
Bancroft, Debbie/Richard  
Goetz, Frederick/Mary  
*In Honor of Michael White*  
Tsarouhas, Catherine  
*In Honor of Todd Wray*  
Wray, John/Phyllis

### MEMORIAL GIFTS

*In Memory of Alfred Aepli*  
Schue, John/Barbara  
*In Memory of Claudia Agar*  
Agar, Robert/Inez  
*In Memory of Diane Ahrens*  
Ahrens, Ray  
Ahrens, Suzy/Steve Hine  
Ratchye, Jean  
Schertler, Mary  
Schutten, Terry/Freddie  
*In Memory of Jacquelyn Coleman*  
Coleman, Earline  
O'Reilly, Kate  
*In Memory of Bram Drew*  
Ashwood, Carol  
Beckstrom, Lauren  
Blatchley, Lionel/Joann  
Burdick, Allan/Mary  
Drew, Alden/Mimie Pollard  
Espe Lillo, Joanne  
Goodwin, Gary  
Heckler, Kristine/Steven  
Lammi, Michael/Sharon Gorney  
Lehmann, Karen/David  
Maghakian, Harry/Judy  
McDonald, Malcolm  
Nesje, Merald/Ann  
Nordin, Rob/Nancy Kosciolek  
Olson, Thomas/Wendy  
Panshin, Dan/Patricia  
Pelto, Patricia  
Stewart, Jean/Paul  
Woelfel, Becky/Jerry  
*In Memory of Daniel Fenton*  
Fenton, Raymond/Karen  
*In Memory of Alex Galle*  
Galle, Bart/Lynn  
Galle, Dorothy  
*In Memory of Toni Gersich's Daughter-In-Law*  
Gersich, Toni  
*In Memory of Yale Greenfield*  
Greenfield, Ida  
*In Memory of Rachie Gray*  
Earp, Samuel  
*In Memory of Rachel Grey*  
Phillips, Ann  
*In Memory of Betty Hicks*  
Maghakian, Harry/Judy  
*In Memory of Ann Hodgson*  
Jerdee, Marcia/Don  
*In Memory of Kim Koppa*  
Koppa, Pat  
*In Memory of Dick Lange*  
Field, Jr., Litton  
Hogan-Schiltgen, Jan  
McDonald, Malcolm  
*In Memory of Paul Otis Lee*  
Hirdman, Paul/Becky Lee  
*In Memory of Agnes Liesenfeld*  
Peter, Jim/Donna

In Memory of David Ling  
Ling, Joann

In Memory of Helen Livingston  
Nichols, Costas/Barbara

In Memory of Elizabeth and  
Margaret Lowell  
Lowell, Faith

In Memory of Dorothy Michaels  
Maghakian, Harry/Judy

In Memory of Eileen M. Nelson  
Nelson, Ronald/Betty Lou

In Memory of Cathleen Overlie  
Senander, Jack

In Memory of Renate Pahnke  
Cheatham, Kay/Bob

In Memory of Dixie Rasmussen  
Rasmussen, Dr. Roger

In Memory of Michael J. Riley  
Pang, Jenny/Jeffrey Sullivan  
Riley, Claudia  
Riley, Marion

In Memory of Dennis Ruter  
Armbrust, Julie  
Carleton, Jeffrey/Jill  
Gilster, Joyce  
Gregersen, Alfred/Lila  
Johnson, James/Linda  
Ketchum, Bruce/Katherine  
Leitzen, Bernard/Ione  
Nelson, Duaine/Rose  
Ruter, Martin/Gladys  
Schadow, Susan

In Memory of Doris C. Sandquist  
Sandquist, Lennart/Elizabeth

In Memory of Emily Seesel's Sister  
Seesel, Emily

In Memory of Frank Staffenson  
Cornelius, Jennifer/Christopher  
Kuehl, Ryan/Renae  
McGurk, Brenda/John  
McGurk, Penny  
Osmon, Nancy  
Wells, Robert

In Memory of Florence Kunian Schoff  
Gross, Susan/Bert

In Memory of Cassie Turner  
Turner, Lawrence/Gail

In Memory of SA Thomas Wyatt  
Reed's Sales and Service/Ingrid Wyatt

## VOLUNTEERS

Adair, Jackie  
Ahshuler, Berina  
Anderson, Allison  
Anderson, Jamie  
Anderson, Janice  
Anderson, Sandra  
Anderson, Ellen  
Ahrens, Ray  
Allen, Pat  
Austin, Deborah Ann  
Baillon, Caroline  
Barrett, Marge

Becker, Beth  
Bedard, Erica  
Berglin, Linda  
Besch, Mary  
Betchwars, Jeff  
Betz, Dallas  
Blakestad, Nancy, Ph.D.  
Blan, Ian  
Blum, Lissa  
Bogut, Elaine  
Boardman, Owen  
Boss, Andy  
Braun, Mike  
Buffington-Howell, Faye  
Burlingame, Luana  
Burdick, Allan  
Caffee, Hannah  
Calott, Peter  
Carlson, Lee  
Cedarleaf-Dahl, Elissa  
Christensen, Ian  
Clater, Nichelle  
Coal, Char  
Colbaugh, Taften  
Coleman, Earline  
Conley-Braun, Jayne  
Corum, Gary  
Cox, Charles  
Culp, MaryAnn  
DeBaut, Elizabeth  
Dillon, Bob  
Dillon, Casey  
Dillon, Nancy, Ph.D., R.N.  
Douglas, Erin  
Dorfman, Commissioner Gail  
Drew, Alden  
Drew, Josh  
DuBois, Bonnie  
Fagerstrom, Jean  
Flavin, Gabe  
Fogelsong, Eric  
Follmer, Diane  
Fox, Blake  
Gabe, Nursel  
Galle, Bart  
Garretson, Don  
Gibson, Denise  
Gorg, Dave  
Graber, Carma  
Granda, Amy  
Gunnick, Gary  
Habstritt, Brian  
Hartley, Helen  
Healey, Bill  
Helmeke, Shawn  
Hennesy, Bob  
Hertel, Aled  
Hines, Linda  
Hines, Elle  
Hogan, Jan  
Horne, Suzanne  
Howard, Dean  
Howard, Gieg  
Howe, Jessica  
Iverson, Pamela  
Jackson, Maris

Johnson, Alison Bergblom  
Jones, Brian  
Jones, Linda  
Jones, Robert  
Jones, Tyann  
Jones, Will  
Klas, Linda  
Klas Johnson, Margee  
Kleven, Krystle  
Kluznik, John, M.D.  
Knowlton, Joanne  
Koch, Mike  
Kolmer, Cara  
Krushwitz, John  
Krogh, Kristina  
Lange, Sidney  
LaVelle, Elias Luke  
Levenhagen, Jennifer  
Lindgren, Anne  
Litecky, Sue  
Lowe, Ann  
Markon, Rachel  
Marino, Steve  
Marx, Commissioner Tim  
McCoy, Richard  
McDonald, Malcolm  
McJilton, Bud  
McKillips, Nancy  
McMillan, Molly  
DeBaut, Elizabeth  
Meyer, Goeff  
Meyer, Josie  
Meyer, Trig  
Miller, Keith  
Moran, Cheryl  
Nelson, Erik  
Nelson, Lee  
Nicholson, Dick  
Nixon, Catherine  
Nunez, Jeneve  
Oleson, Nancy  
O'Reilly, Kate  
Parish, Bob  
Peter, Jim  
Peterson, Bryant  
Pielow, Joe  
Pierce, Steve  
Powell, Thornton  
Ratliff, Mary  
Reithmeier, Judy  
Reithmeier, Steve  
Robinson, John  
Rorke, Pat  
Roszak, Linda  
Rothschild, Richard  
Rith, Amber  
Rutman, Allie  
Sannell, Adelle

Satorius, Linda  
Schulz, Chuck, M.D.  
Seeb, Patrick  
Shaw, Elizabeth  
Sher, Rachel  
Silver, Hannon  
Silver, Steve  
Simly, Laverne  
Smith, Erica  
Sponheim, Scott, Ph.D.  
Stack, Eileen  
Stark, Trisha  
Stansberry, Francis  
Steinholm, Kathleen  
St. John, Kathy  
Strasburg, Bailey  
Taylor, Amanda  
Taylor, Jon  
Tieman, Hannah  
Valentine, Mark  
Verret, Paul  
Waldrop, Ali  
Waldrop, Slone  
Walton, Donell  
Wanhala, Kristin  
Webb, Bertha  
Welk, Jenifer  
Webster, Elizabeth  
Westrom, John  
Weisz, Shannon  
Wentworth, Alesia  
Wheeler, Macey  
White, Mary  
Williams, John  
Wray, Nancy  
Yang, Tony  
Young, Pat  
Zengerlee, Christine  
Zissler, Lynn

## IN-KIND DONORS ARTIBILITY

Anderson, Sandra  
Dixie's on Grand  
Leckas, Terri  
Nelson's Cheese  
Scott, Carrie  
Sferra, Rick  
Shapco  
Two Good Cooks  
Wray, Nancy

† deceased

\* This activity made possible, in part, by funds provided by the Metropolitan Arts Council through an appropriation by the Minnesota Legislature.

We apologize for any errors or omissions. Accurate donor lists are important to us. Please contact us if you are listed incorrectly: 651-288-3508.

# BOARD & ADVISORS

## BOARD OF DIRECTORS

Nancy McKillips, *President*  
Alden Drew, *Vice President*  
Allan Burdick, *Treasurer*  
Elizabeth Webster, *Secretary*  
Janice Anderson  
Jeff Betchwars  
Steve Marino  
Keith Miller  
James Peter  
Linda Roszak  
Linda Satorius  
Patrick Seeb  
Elizabeth Shaw  
Trisha Stark, Ph.D., LP

## HONORARY BOARD MEMBERS

Commissioner Gail Dorfman  
Molly McMillan  
Dick Nicholson  
Charles Schulz, M.D.  
Paul Verret

**FRONT ROW L TO R:** Nancy McKillips, *President*, Trish Stark, Elizabeth Shaw, Linda Roszak, Linda Satorius, Jim Peter  
**BACK ROW L TO R:** Patrick Seeb, Elizabeth Webster, *Secretary*, Jan Anderson, Alden Drew, *Vice President*, Steve Marino, Jeff Betchwars, Keith Miller; not shown, Allan Burdick, *Treasurer*



## ADVISORY COUNCIL

Senator Ellen Anderson, *Chair*  
Ray Ahrens  
Marge Barrett  
Senator Linda Berglin  
Andy Boss  
Luana Burlingame  
Peter Calott  
Lee Carlson

Charles Cox  
Elizabeth DeBaut  
Nancy Dillon, Ph.D.  
Diane Follmer  
Don Garretson  
Robert Hennesy  
Jan Hogan, Ph.D.  
Robert Jones, D.D.S.

Linda Klas  
Margee Klas Johnson  
John Kluznik, M.D.  
Sidney Lange  
Sue Litecky  
Malcolm McDonald  
Kate O'Reilly  
Robert Parish

Thornton Powell  
Patricia Rorke  
Scott Sponheim, Ph.D.  
John Westrom  
Macey Wheeler  
Mary White  
Nancy Wray  
Tong (Tony) Yang

# PROGRAMS

## HOMELESS SERVICES

8th Street Services  
Metropolitan Homeless Outreach Services (MHOP) – Hennepin and Ramsey  
Housing First – Hennepin and Ramsey  
Safe Haven Services – Hennepin House and Ramsey House  
Project SAIL (Support and Advocacy for Independent Living)

## CRISIS MANAGEMENT

Diane Ahrens Crisis Residence  
Nancy Page Crisis Stabilization Services  
Riverwind Crisis Response Services  
Tri-County Crisis Services

## DROP-IN CENTERS

APOLLO Resource Center and Community Services  
Integrated Service Network – Northside Community Support Program

## LIVING SKILLS

Adult Rehabilitative Mental Health Services (ARMHS): Anoka County  
Anoka Resident's Community Housing (A.R.C.H.)  
Deaf Mental Health Services  
Epilepsy and Mental Health Services  
Home Health Agency  
Housing with Services in Anoka County  
Integrated Service Network – Huss Recovery Services  
Next Steps  
Project Recovery

## RESIDENTIAL

Adult Foster Care in Dakota County – Foliage House, McAndrews House, River Hills House, Colonial House  
Deaf Supportive Living  
Heather Ridge  
Housing with Services in Ramsey County – Edgebrook House, London Place, Ruth House  
Integrated Service Network – Anchor House  
Maghakian Place  
Montreal Court Supportive Living  
Penn House Adult Foster Care  
People II  
Scott House Adult Foster Care  
Summit Park Supportive Housing  
Waivered Services: Jordan House and Upton House

## CASE MANAGEMENT

Anoka County Stabilization and Triage Team (STAT)  
Anoka Targeted Case Management  
Assertive Community Treatment for Homeless in Hennepin County  
Chemical Dependency Case Management Services of Ramsey County  
Community Services in Dakota County  
Deaf and Hard of Hearing Services of Ramsey County  
Service Coordination in Hennepin County  
Service Coordination in Ramsey County

## FAMILY SUPPORT

Support, Advocacy, Family, Education (SAFE)

# WE THE PEOPLE ARE PEOPLE INCORPORATED

A NONPROFIT ORGANIZATION FOUNDED IN 1969, PEOPLE INCORPORATED PROMOTES AND SECURES INDEPENDENCE FOR PEOPLE WITH MENTAL ILLNESS AND OTHER BRAIN DISORDERS.

DESIGN  
ThinkDesign Group

CONTENT DEVELOPMENT  
& WRITING  
Nancy Blakestad

PHOTOGRAPHY  
Tony Nelson (board photo)



MENTAL HEALTH SERVICES

317 York Avenue  
St. Paul, Minnesota 55130  
651.774.0011 voice  
651.774.6535 tty  
651.774.0606 fax  
PeopleIncorporated.org

---

NON-PROFIT ORG.  
U.S. POSTAGE  
PAID  
ST. PAUL, MN  
PERMIT NO. 5422

---